

PEAKing at Christmas TAG sale!

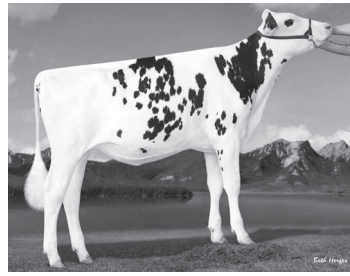
Sale at Budjon Boarding; N9995 Soo Rd, Lomira, WI ♦ December 14 - 9am to December 15 - 5pm



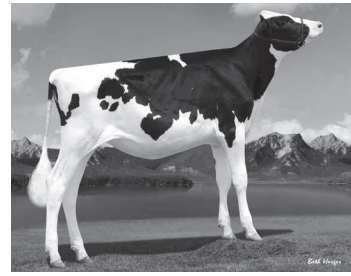
**BRYHILL PURE MADEMOISELLE
+2598G**
3/16 AltaFIREBIRD +2613G +72F +8.OPL
7/16 Jett +2736G +2201M +79F +68P
8/16 AltaFIREUP +2614G +79F +43P



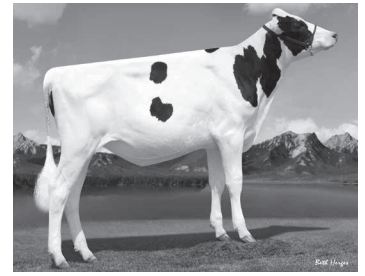
**CLEAR-ECHO OVATION-ET
+2568G**
7/16 AltaFIREUP +2594G +1478M +92F +46P
8/16 Montana +2650G +3460LPI +2934Pro\$
8/16 Montana +2643G +1245M +102F +43P
8/16 Heisenberg +2649G +1356M +85F +52P
9/16 Heisenberg +2645G +1236M +99F +53P



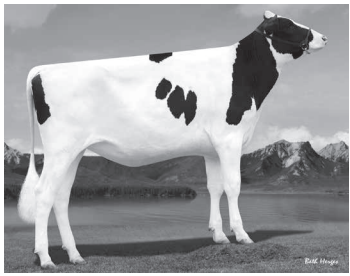
**MINNIGAN-HILLS DARLA-ET
+2699G**
9/16 Detour +2744G +1437M +3494LPI
4/16 AltaSUPERSTAR +2603G +1673M +54F
9/16 Franchise +2668G +1734M +69F +51P



**COYNE-FARMS YODER ANNA-ET
+2606G**
9/16 Jett +2713G +1177M +84F +48P



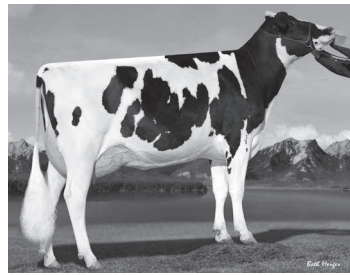
**HIGHERRANSOM RACER GINA-ET
+2602G**
9/16 AltaMORENO +2742G +1274M +3442LPI



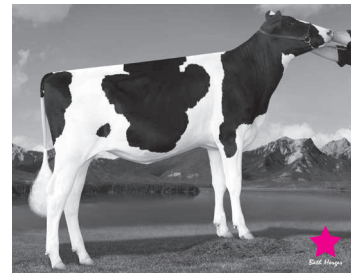
**IHG CHRISTINA-ET
+2627G**
8/16 Montana +2665G +1118M +72F +50P
8/16 AltaBURNER +2637G +1319M +88F



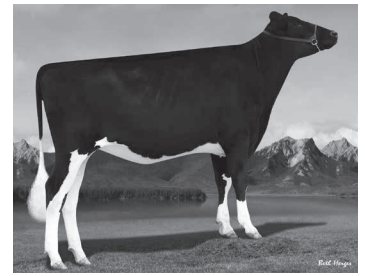
**COMPASS-TRT AMRICA JABRA-ET
VG-85 +2555G**
7/16 Montana +2652G +87F +48P +6.8 PL
7/16 Montana +2611G +1267M +80F +48P



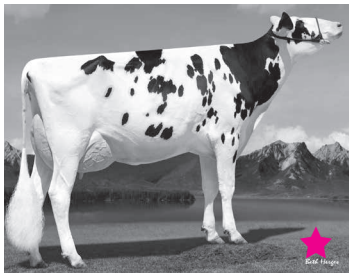
**NO-FLA SHINE-ET
GP-83 +2538G**
9/16 Detour +2668G +93F +50P +7.5PL
9/16 Hang-Time +2645G +1695M +92F
9/16 Hang-Time +2600G +1009M +90F



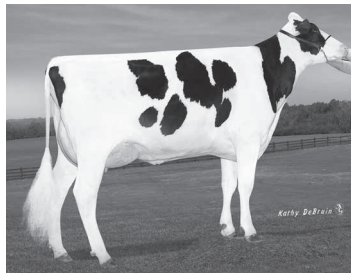
**ZIMMERVIEW DEFENDER KULA-ET
+2512G**
5/16 Jedi +2620G +1816M +60F +61P
5/16 Jedi +2680G +82F +43P +7.5PL
9/16 AltaSUPERSTAR +2667G +66F +157RZG



**VIEW-HOME AUBURN-ET
+26538G**
8/16 Amplify +2681G +1347M +91F +55P
9/16 Draftpick +2653G +80F +2784Pro\$



**GEN-I-BEQ BOOKKEEPER ANNIE
VG-86 +2395G**
6/16 AltaFIREUP +1319M +156RZG +320 NVI
7/16 Jett +2653G +1822M +75F +154RZG



**OCD SUPERSIRE 9882-ET
VG-86 +2701G**
5/16 AltaHOTSHOT +2642G +1720M 68F +53P
5/16 AltaHOTSHOT +2640G +1158M 75F +49P



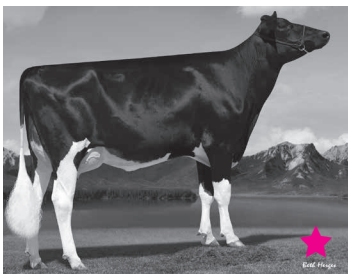
**PEN-COL SS BETH-ET
+2678G**
4/16 AltaSUPERSTAR +2613G +71F +48P
4/16 AltaSUPERSTAR +2621G +1583M +59F
9/16 Draftpick +2699G +979M +77F +50P



**MORNINGVIEW HAL MIRACLE-ET
+2535G**
4/16 Montross +2650G +1484M +80F +51P
7/16 Jedi +2652G +1913M +69F +64P



**TRIPLECROWN ALMIRAH-ET
+2544G**
7/16 Spark +2633G +1464M +55F +48P
9/16 AltaFIREUP +2648G +1047M +2755PRO\$



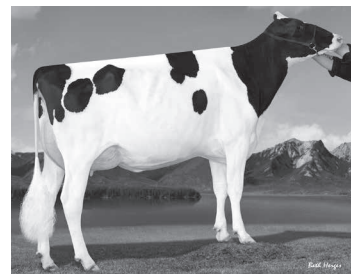
**MS HUE TANGO 57644-ET
VG-86 +2669G**
6/16 Boastful +2636G +924M +77F +51P
8/16 Amplify +2696G +1291M +153RZG
8/16 Amplify +2694G +1222M +74F +48P
9/16 Amplify +2660G +1308M +82F +60P



**EDG CC KARAT-ET
VG-88 +2608G +284NVI**
+1382M +60F +48P +7.6PL



**PEN-COL SS MILLY
VG-85 +2652G**
4/16 AltaFIREBIRD +2590G +87F +48P



**OCD MCCUTCH FAST COMPANY
VG-88 +2485G**
7/16 Jedi +2609G +1192M +95F +57P
8/16 Detour +2626G +1239M +70F +46P
8/16 Detour +2606G +1257M +64F +42P



**MISS CO-VISTA TANGO CLOVE
VG-86 +2573G**
8/16 Montana +2701G +1581M +3410LPI
8/16 Afterburner +2650G +1634M +76F +56P

- ♦ Come enjoy PEAK holiday cheer with snacks and refreshments!
- ♦ PEAK is offering over 85 lots of index heifers and cows with GTPI's from 2600-2700+!
- ♦ All donor cows will be on display and offered. Many have great flush records!
- ♦ "Intent to purchase" bids officially begin at noon on Dec. 14 and will be accepted prior to and at the beginning of the sale. Full details in the catalog.
- ♦ Sale will be broadcast via www.cowbuyer.com with real-time bidding to pre-approved buyers!
- ♦ View the online catalog at www.peak-genetics.com and www.holsteinworld.com



Sales Force

Scott Culbertson
Jon Schefers
Mike Menendez

507.923.1881
320.260.5436
845.598.8499

Lloyd Simon
Steve Berland
Tom Cull
Chad Ryan

715.803.5696
507.254.5281
920.960.0350
920.960.1449

★ available to purchase

PEAK
GENETICS