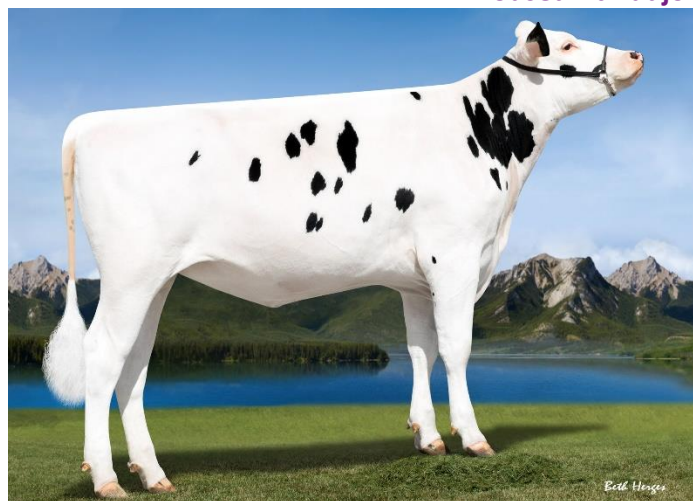


WELCOME WHISPER-ET

JEDI x GP MIDNIGHT x FREDDIE x JEEVES
 HO840F003134284729 DOB 20-May-16
 Beta-Casein: A1A1



TPI™ **2695** NM\$ **845**

- Bred 23-Dec-17 to 011HO11981 AltaMONTTOYA
- Preg with heifer

PRODUCTION	CDCB Apr-18		
Milk	2061 Lbs		
Protein	75 Lbs	0.04	%
Fat	66 Lbs	-0.04	%

PEDIGREE	
Sire	S-S-I MONTROSS JEDI-ET
Dam	WELCOME MIDNIGHT WYN-ET GP 83
MGS	S-S-I EPIC MIDNIGHT-ET
MGD	WELCOME FREDDIE WILMOT-ET
MGGD	WELCOME JEEVES WALTON-ET

CONFORMATION	HA-USA Apr-18
PTAT	1.41
UDC	1.52
FLC	0.54

	CDN-GEBV CDN 201804	CDN-DGV CDN 201804	DEU-gZW VIT
LPI/RZG	3329	3388	
Milk	2212	2323	
Fat	69	68	
Protein	88	95	
Herd Life	111	112	
Daughter Fertility	111	113	
SCS	2.87	2.87	
Conformation	4	4	
Mammary	5	4	
Feet & Legs	3	3	
% Fat	-0.16	-0.22	
% Protein	0.13	0.15	
Calving Ability	100	99	
Milking Speed	103	103	

HEALTH	CDCB Apr-18
Productive Life	7.7
Daughter Pregnancy Rate	2.8
Somatic Cell Score	2.84
Sire Calving Ease	8.3
Daughter Calving Ease	6.1
Sire Stillbirth	7.8
Daughter Stillbirth	5.7
Heifer Conception Rate	2.7
Cow Conception Rate	5.1



Dam
 WELCOME MIDNIGHT WYN-ET GP 83

WELCOME LEEANNE-ET

JEDI x EX TANGO x O-STYLE x NIFTY
 HO840F003134284703 DOB 01-May-16
 Beta-Casein: A2A2



TPI™ 2648 NM\$ 799

- Bred 08-Oct-17 to 011HO12093 AltaNITRO
- Preg with heifer

PRODUCTION	CDCB Apr-18		
Milk	2064 Lbs		
Protein	69 Lbs	0.02	%
Fat	75 Lbs	-0.01	%

PEDIGREE	
Sire	S-S-I MONTROSS JEDI-ET
Dam	WELCOME TANGO LONA EX 90
MGS	MR WELCOME HILL TANGO-ET
MGD	WELCOME O-STYLE LONNIE-ET
MGGD	WELCOME NIFTY LOLITA

CONFORMATION	HA-USA Apr-18
PTAT	1.82
UDC	1.61
FLC	1.80

	CDN-GEV CDN 201804	CDN-DGV CDN 201804	DEU-gZW VIT
LPI/RZG	3152	3179	
Milk	2026	2129	
Fat	67	70	
Protein	76	81	
Herd Life	107	107	
Daughter Fertility	106	106	
SCS	2.77	2.76	
Conformation	6	5	
Mammary	5	4	
Feet & Legs	6	6	
% Fat	-0.09	-0.10	
% Protein	0.08	0.09	
Calving Ability	106	108	
Milking Speed	94	94	

HEALTH	CDCB Apr-18
Productive Life	5.7
Daughter Pregnancy Rate	1.0
Somatic Cell Score	2.84
Sire Calving Ease	6.4
Daughter Calving Ease	5.0
Sire Stillbirth	6.8
Daughter Stillbirth	5.4
Heifer Conception Rate	0.9
Cow Conception Rate	2.6



Dam
WELCOME TANGO LONA EX 90



2nd Dam
WELCOME O-STYLE LONNIE-ET



3rd Dam
WELCOME NIFTY LOLITA

BACON-HILL PRESTIGE-ET

MODESTY x SHOTGLASS x PLANET x O MAN
 HO840F003134284641 DOB 20-Feb-16
 Beta-Casein: A1A2



TPI™ **2616** NM\$ **782**

- Bred 23-Sep-17 to 011HO12088 AltaACTOR
- Preg with heifer

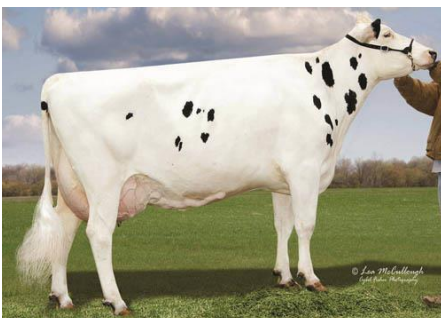
PRODUCTION	CDCB Apr-18		
Milk	1418 Lbs		
Protein	55 Lbs	0.04	%
Fat	79 Lbs	0.09	%

PEDIGREE	
Sire	BACON-HILL PETY MODESTY-ET
Dam	EDG HALLIE SHOTGLASS 745-ET
MGS	BUTZ-BUTLER SHOTGLASS-ET
MGD	B Z PLANET 7807 HALLE-ET
MGGD	B Z OMAN 5796

CONFORMATION	HA-USA Apr-18
PTAT	1.87
UDC	2.45
FLC	1.70

	CDN-GEBV CDN 201804	CDN-DGV CDN 201804	DEU-gZW VIT 201804
LPI/RZG	3212	3360	144
Milk	1870	2015	1193
Fat	93	100	60
Protein	74	83	44
Herd Life	108	109	122
Daughter Fertility	103	103	106
SCS	2.75	2.66	115
Conformation	6	7	122
Mammary	7	9	126
Feet & Legs	6	6	113
% Fat	0.21	0.23	0.12
% Protein	0.12	0.15	0.04
Calving Ability	107	106	
Milking Speed	99	99	110

HEALTH	CDCB Apr-18
Productive Life	5.1
Daughter Pregnancy Rate	0.0
Somatic Cell Score	2.77
Sire Calving Ease	6.1
Daughter Calving Ease	4.5
Sire Stillbirth	6.6
Daughter Stillbirth	5.4
Heifer Conception Rate	1.5
Cow Conception Rate	0.9



2nd Dam
 B Z PLANET 7807 HALLE-ET

3rd Dam
 B Z OMAN 5796